

PENN TOWNSHIP

Each township has six files containing six sections in each, and one file containing all 36 sections.

Penn01to06.pdf
Penn07to12.pdf
Penn13to18.pdf
Penn19to24.pdf
Penn25to30.pdf
Penn31to36.pdf
PennAll36.pdf

The points are listed starting with the point above the SE corner and continuing in a counter-clockwise rotation around the section. This normally begins with the East point, Northeast, then North, but may also include Witness Corners, and/or Meander Corners.

Definitions

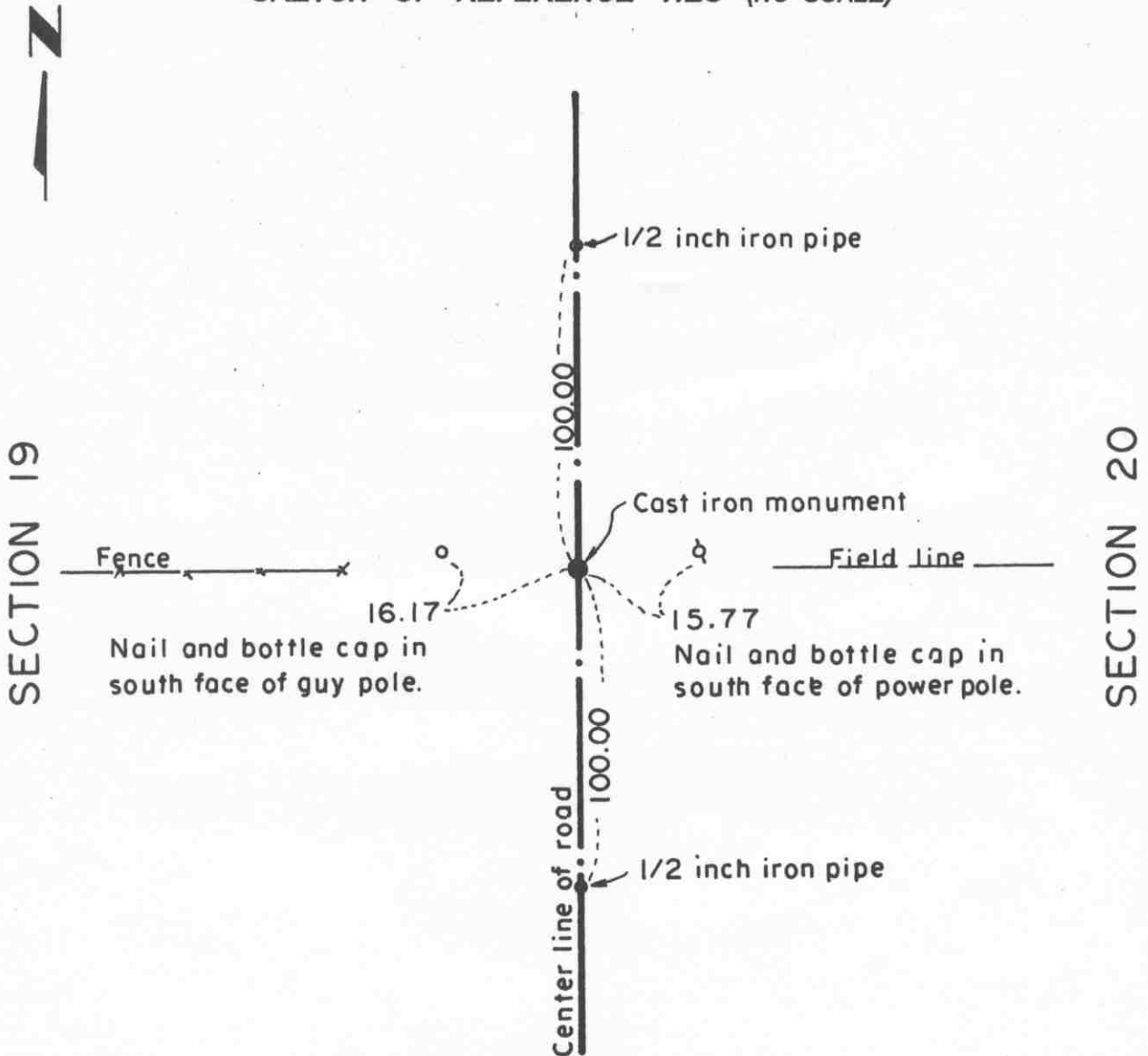
Witness Corner: A witness corner “stands in” when the true corner cannot be monumented or occupied because of difficult terrain or obstruction of the corner sight. The witness corner must be on the section line and is usually 5 or 10 chains away from the true corner.

Meander Corner: The intersection of a township, range, or section line and the banks of a navigable stream or meandering body of water.

Certificate of Location of Government Corner

East Quarter corner, Section 19, Township 114 North, Range 29 West

SKETCH OF REFERENCE TIES (NO SCALE)



Statement of evidence relative to this corner location on sheet 2

I hereby certify that this document was prepared by me or under my direct supervision.

Willard Pellinen
 Willard Pellinen
 McLeod County Surveyor
 License No. 9626.

Date Aug. 7, 1995

**OFFICE OF THE COUNTY RECORDER
 MCLEOD COUNTY, MINNESOTA**

I hereby certify that this document was filed in this office at 9 o'clock A. M. on the 8th day of August 19 95.

GABRIEL OSTLE MALDRE, MCLEOD COUNTY RECORDER, County Recorder

By Thyllis Sopkowiak, Deputy.

Document No. 267397

***Certificate of Location of Government Corner
East Quarter Corner, Section 19, Township 114 North, Range 29 West***

July, 1855. A. H. Runyon of the General Land Office established this corner. He set a post, drove a charred stake, raised a mound of earth with trench and pits and planted maclura seeds at the southeast corner of the mound.

August, 1971. DNR found a 12 inch by 24 inch stone with a chiseled + on top.

April 3, 1978. Dickman Knutson, county surveyor, dug and found the stone found previously by DNR and took reference ties. This was on the center of the north-south road, field division to the east.

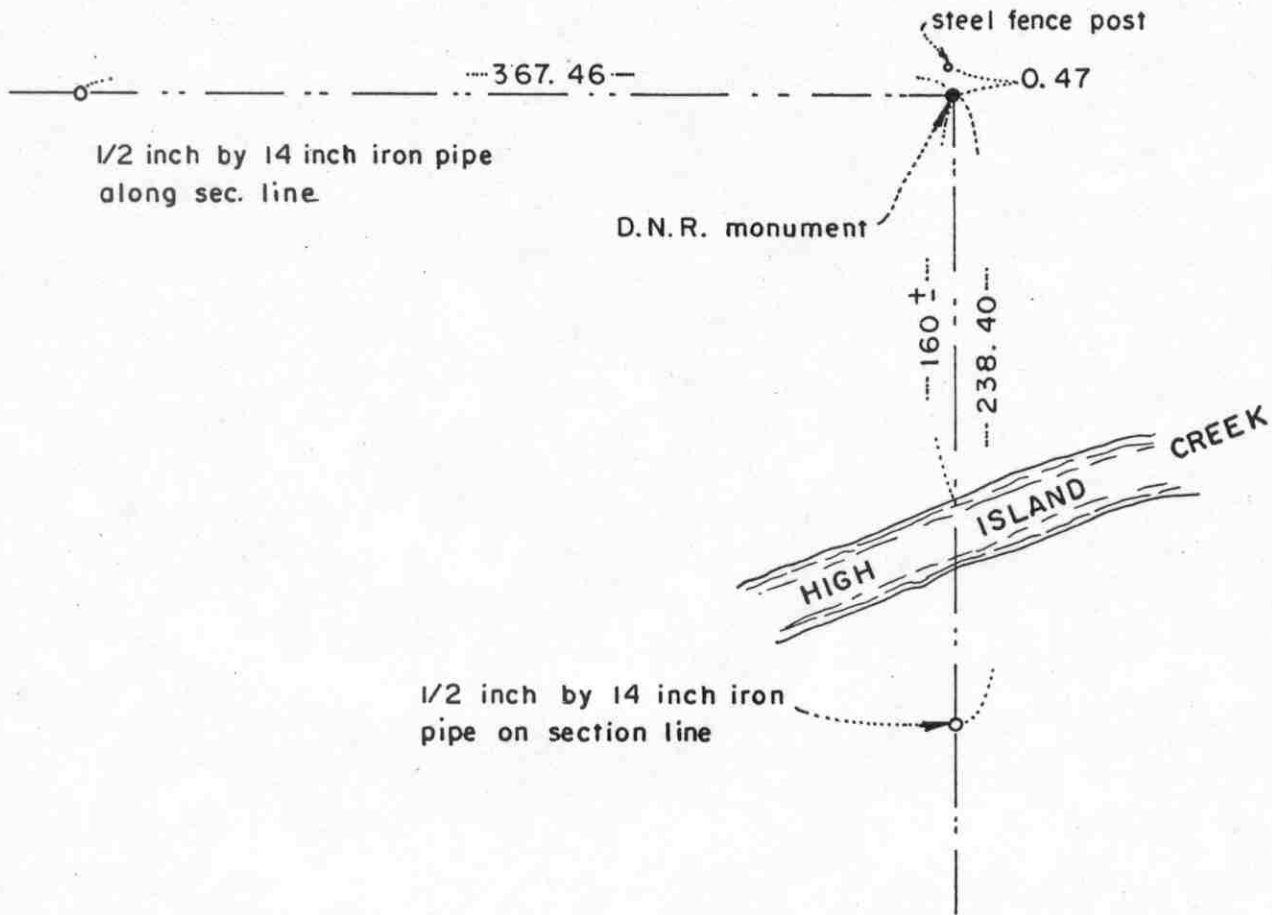
July 23, 1980. We set a McLeod County cast iron monument over the stone.

This corner is 2.79 feet north of a split between the section corners and 7.88 feet east of a straight line between the section corners.

February 27, 1995. We found the monument in good condition down 6 inches below the surface of the gravel road and took new available ties.

Certificate of Location of Government Corner

SKETCH OF REFERENCE TIES
(NO SCALE)



Statement of evidence relative to this corner location on sheet 2

I hereby certify that this document was prepared by me or under my direct supervision.

Willard Pellinen
Willard Pellinen
McLeod County Surveyor
License No. 9626
Date January 5, 1987

OFFICE OF THE COUNTY RECORDER
MCLEOD COUNTY, MINNESOTA.

I hereby certify that this document was filed in this office at 8 o'clock A.M. on the 18th day of October, 19 88.

Carmen Ostlie, County Recorder
By _____, Deputy

Document No. 225034

Certificate of Location of Government Corner

This corner was originally established by the Government in 1855 and was monumented by a wood post in a mound of earth.

In 1971 the DNR talked with Gerald Hochsprung, 43 years old, who farmed the Northeast Quarter of Section 19. He said there were old fence lines along the north and east lines of Section, but had never seen any type of corner marker for the section corner.

The DNR found some remains of the fences and extended the fences to their intersection and set a department monument at the intersection point.

In 1985 we searched this area but found no evidence of the original government corner. We found the DNR monument and accepted this location as marking the obliterated position of the corner.

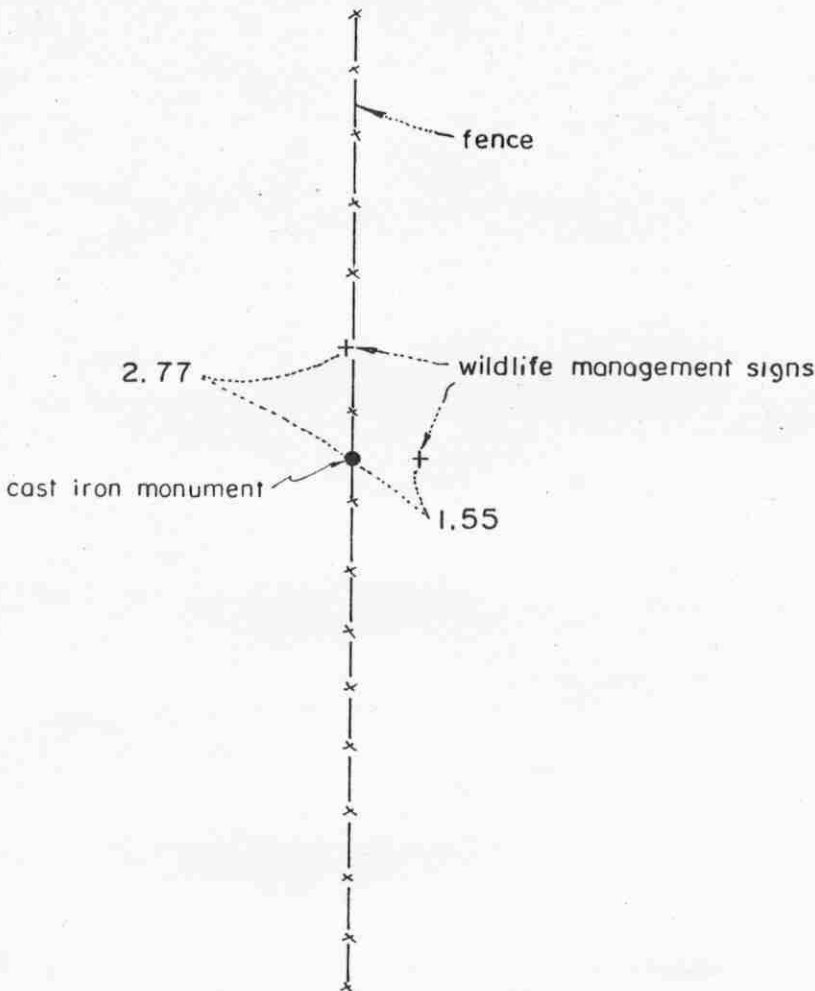
Certificate of Location of Government Corner



SKETCH OF REFERENCE TIES

(NO SCALE)

SECTION 18



SECTION 19

Statement of evidence relative to this corner location on sheet 2

I hereby certify that this document was prepared by me or under my direct supervision.

Willard Pellinen

Willard Pellinen
McLeod County Surveyor
License No. 9626

Date Feb. 9, 1994

OFFICE OF THE COUNTY RECORDER
MCLEOD COUNTY, MINNESOTA.

I hereby certify that this document was filed in this office at 9 o'clock A.M. on the 28th day of March, 1994.

Carmen Estelle Mulder, County Recorder

By _____, Deputy

Document No. 258543

Certificate of Location of Government Corner

This corner was originally established by the Government in 1855 and was monumented by a wood post in a mound of earth.

In 1971, the D.N.R. talked with Gerald Hochspring, 43 years old, who farmed the Northeast Quarter of Section 19. He said an old fence marked the north-south quarter line of Sections 18 and 19 and a field line running east marked the section line. Mr. Meier, who owned land in the Northwest Quarter of Section 19 and in the Southwest Quarter of Section 18, also said the north-south fence marked the quarter lines.

The D.N.R. set a department monument along the fence on a straight line between the section corners. They said this point fell on the north side of an old wooden post lying down, that appeared to be the old corner fence post, with a field line running east.

We ran the north line of Section 19 and found the D.N.R. monument in a straight line between the section corners. We accepted the D.N.R. monument as marking the true location of the quarter corner. We replaced the monument with a McLeod County cast iron monument and took reference ties.

A "lost corner" position would fall about $3\frac{1}{2}$ feet east of this location.

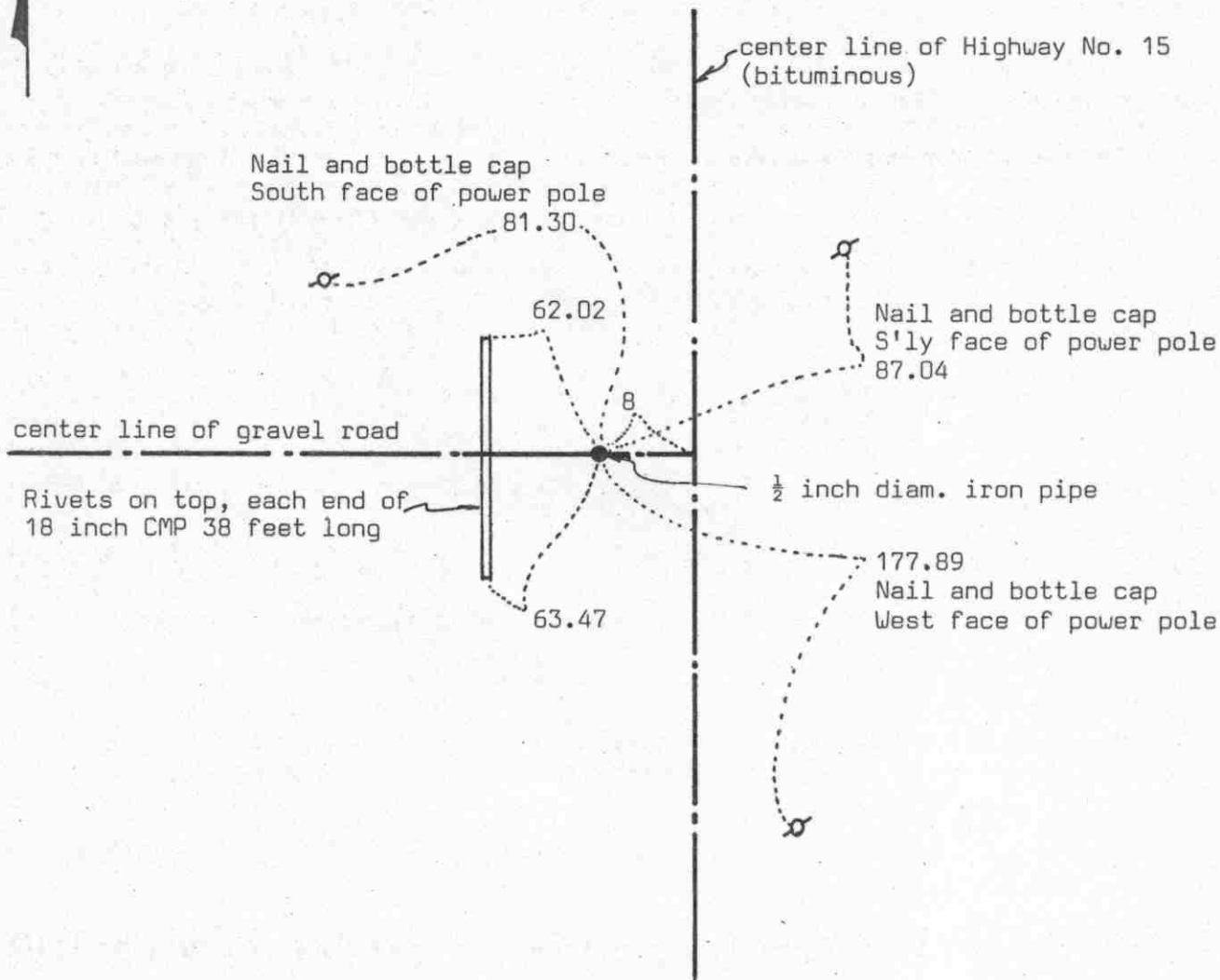
January 11, 1994. We found the monument in good condition and checked the reference ties.

Certificate of Location of Government Corner



SKETCH OF REFERENCE TIES

(NO SCALE)



Statement of evidence relative to this corner location on sheet 2

I hereby certify that this document was prepared by me or under my direct supervision.

Willard Pellinen

Willard Pellinen
McLeod County Surveyor
License No. 9626

Date 4/5/89

OFFICE OF THE COUNTY RECORDER
MCLEOD COUNTY, MINNESOTA.

I hereby certify that this document was filed in this office at 4 o'clock P.M. on the 20th day of April, 1989.

Carmin Pottier, County Recorder

By _____, Deputy

Document No. 227812

NORTHEAST corner, Section 24, Township 114 North, Range 30 West

Certificate of Location of Government Corner

This corner was originally set by John Ryan of the Government Land Office in 1855. He "set post to sections 13, 18, 19, and 24, deposited charcoal, dug pits and trench, built mound and planted osage orange seeds at mound.

On November 2, 1970, McCombs Knutson Associates (Dickman Knutson, County Surveyor) set a PK nail at the corner, 8 feet west of State Highway No. 15 center line station 484+93.4 as shown on the right of way map. Ties to P.O.T. station 484+93.4 on the highway map.

On December 12, 1976, we reset a PK nail using 1970 ties.

On November 27, 1983, we found the PK nail and reference ties good.

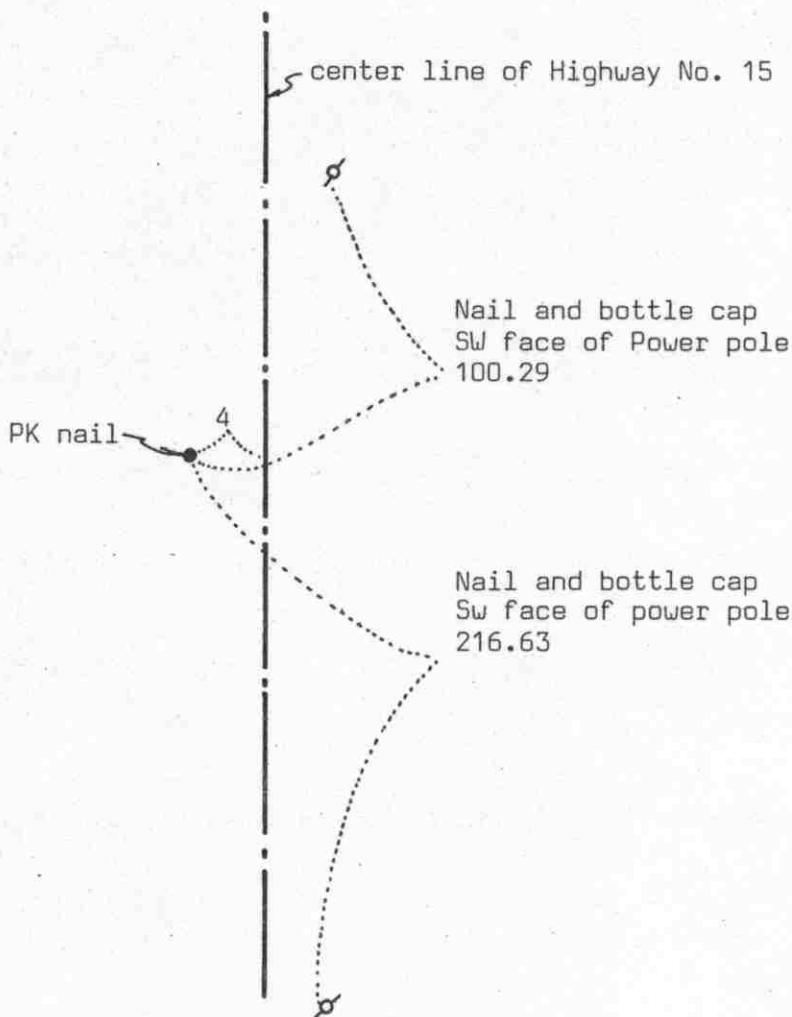
On January 31, 1989, we set a $\frac{1}{2}$ inch diameter iron pipe at the corner using the old reference ties. Road has been resurfaced.

We believe the section corner has been perpetuated by the highway alignment and stationing.

Certificate of Location of Government Corner



SKETCH OF REFERENCE TIES
(NO SCALE)



Statement of evidence relative to this corner location on sheet 2

I hereby certify that this document was prepared by me or under my direct supervision.

Willard Pellinen

Willard Pellinen
McLeod County Surveyor
License No. 9626

Date 4/7/89

OFFICE OF THE COUNTY RECORDER
MCLEOD COUNTY, MINNESOTA.

I hereby certify that this document was filed in this office at 4 o'clock P.M. on the 20th day of April, 19 89.

Carmen Dotlie, County Recorder

By _____, Deputy

Document No. 227813

Certificate of Location of Government Corner

This corner was originally established by the government in 1855. John Ryan set a post, deposited charcoal, dug pits and trench, built a mound and planted osage orange seeds at the corners of the mound.

State Highway No. 15 right of way plans show this corner to be 4 feet left of center line station 458 + 40.1.

In 1967 McCombs Knutson Associates (Dickman Knutson, County Surveyor) set a PK nail 4 feet west of station 458+40.1 as shown on the highway plans.

On December 21, 1970 MKA took new reference ties.

On November 21, 1986, we measured the east line of Section 24 and had a distance of 2637.05 feet to the southeast corner and 2656.63 feet to the northeast corner of Section 24./

On February 1, 1989, we found the PK nail and checked the reference ties.

Certificate of Location of Government Corner

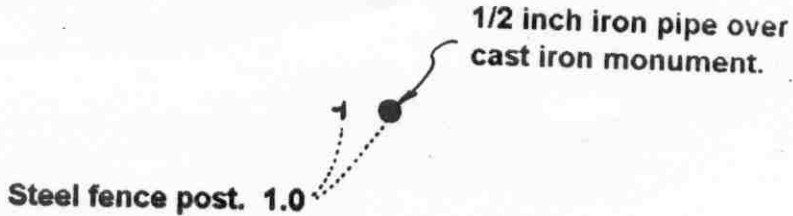
EAST QUARTER corner, Section 20, Township 114 North, Range 29 West

SKETCH OF REFERENCE TIES (NO SCALE)



SECTION 20

SECTION 21



Statement of evidence relative to this corner location on sheet 2

I hereby certify that this document was prepared by me or under my direct supervision.

Willard Pellinen
Willard Pellinen
McLeod County Surveyor
License No. 9626.

Date Sept. 11, 1995

OFFICE OF THE COUNTY RECORDER MCLEOD COUNTY, MINNESOTA

I hereby certify that this document was filed in this office at 9 o'clock A.M. on the 14th day of Sept 19 95.

Carmen Ostlie Quider, County Recorder

By _____, Deputy.

Document No. 268029

Certificate of Location of Government Corner
East Quarter Corner, Section 20, Township 114 North, Range 29 West

July, 1855. A. H. Runyon of the General Land Office established this corner. He set a post, drove a charred stake, raised a mound of earth with trench and pits and planted maclura seeds at the southeast corner of the mound.

October, 1976. DNR talked with Mr. Brelje, 50 years old and he owned the Southwest Quarter of Section 21. His father owned the farm before he did. He said there is a steel post at the place where the old corner fence post used to be. He said this post had been there as long as he can remember and has been accepted as the quarter corner by adjacent land owners.

November, 1976. DNR talked with Mr Leonard Winterfeldt, 70 years old and he owned land in the Northeast Quarter of Section 20. He showed where the post is and agreed with Mr. Brelje that this was the quarter corner.

July 23, 1980. We set a McLeod County cast iron monument in place of the steel post and set the steel post 1 foot west.

We measured 2654.92 feet to the southeast corner of Section 20 and 2629.29 feet to the northeast corner of Section 20. We had an angle of 180 degrees 09 minutes 35 seconds at the east side of the corner, from northeast corner to southeast corner.

Certificate of Location of Government Corner

NORTHEAST corner, Section 20, Township 114 North, Range 29 West

SKETCH OF REFERENCE TIES (NO SCALE)



SECTION 17

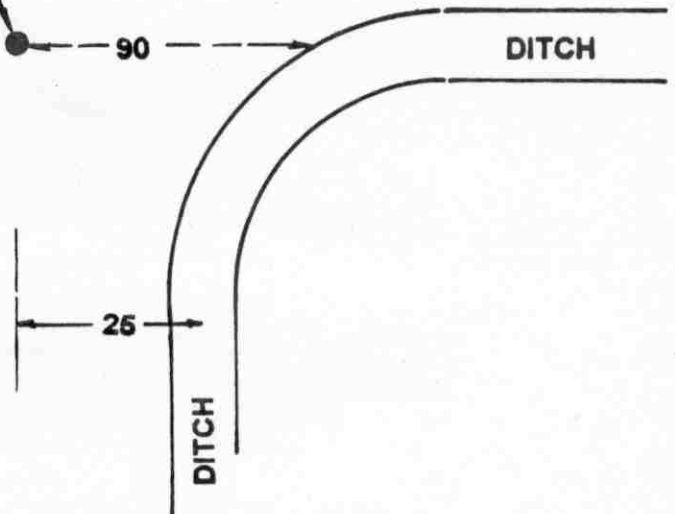
SECTION 16

Cast iron monument

2650.68 TO N1/4 CORNER
OF SEC. 20.

2629.28 TO E1/4 CORNER
OF SEC. 20.

2638.28 TO E1/4 CORNER
OF SEC. 17.



SECTION 20

SECTION 21

Statement of evidence relative to this corner location on sheet 2

I hereby certify that this document was prepared by me or under my direct supervision.

Willard Pellinen
Willard Pellinen
McLeod County Surveyor
License No. 9626.

Date Sept. 11, 1995

OFFICE OF THE COUNTY RECORDER
MCLEOD COUNTY, MINNESOTA

I hereby certify that this document was filed in this office at 9 o'clock A. M. on the 14th day of Sept 19 95.

Carmen Ostlie Mulder, County Recorder

By _____, Deputy.

Document No. 268028

Certificate of Location of Government Corner
Northeast Corner, Section 20, Township 114 North, Range 29 West

July, 1855. A. H. Runyon of the General Land Office established this corner. He set a post in a marsh, drove a charred stake, raised a mound of earth with trench and pits and planted maclura seeds at the southeast corner of the mound.

August, 1971. DNR talked with Leonard Winterfeldt, who lived in the Southwest Quarter of Section 16. He said there was a wooden fence post 2 feet east of the section corner. Mr. Winterfeldt said he left the post to mark the corner.

May, 1976. The DNR found no evidence of the fence post.

November, 1976. DNR talked with Mr. Winterfeldt again and he showed where he had set a half inch diameter iron rod to mark the position of the old corner fence post. DNR dug around the rod but found no other evidence of the government corner. DNR set a 3/4 inch by 24 inch iron rod at the west side of the iron set by Mr. Winterfeldt.

November 16, 1979. We found the iron rod set by the DNR and replaced it with a McLeod County cast iron monument, with a 1/2 inch diameter iron pipe below the monument. We took angular reference ties .

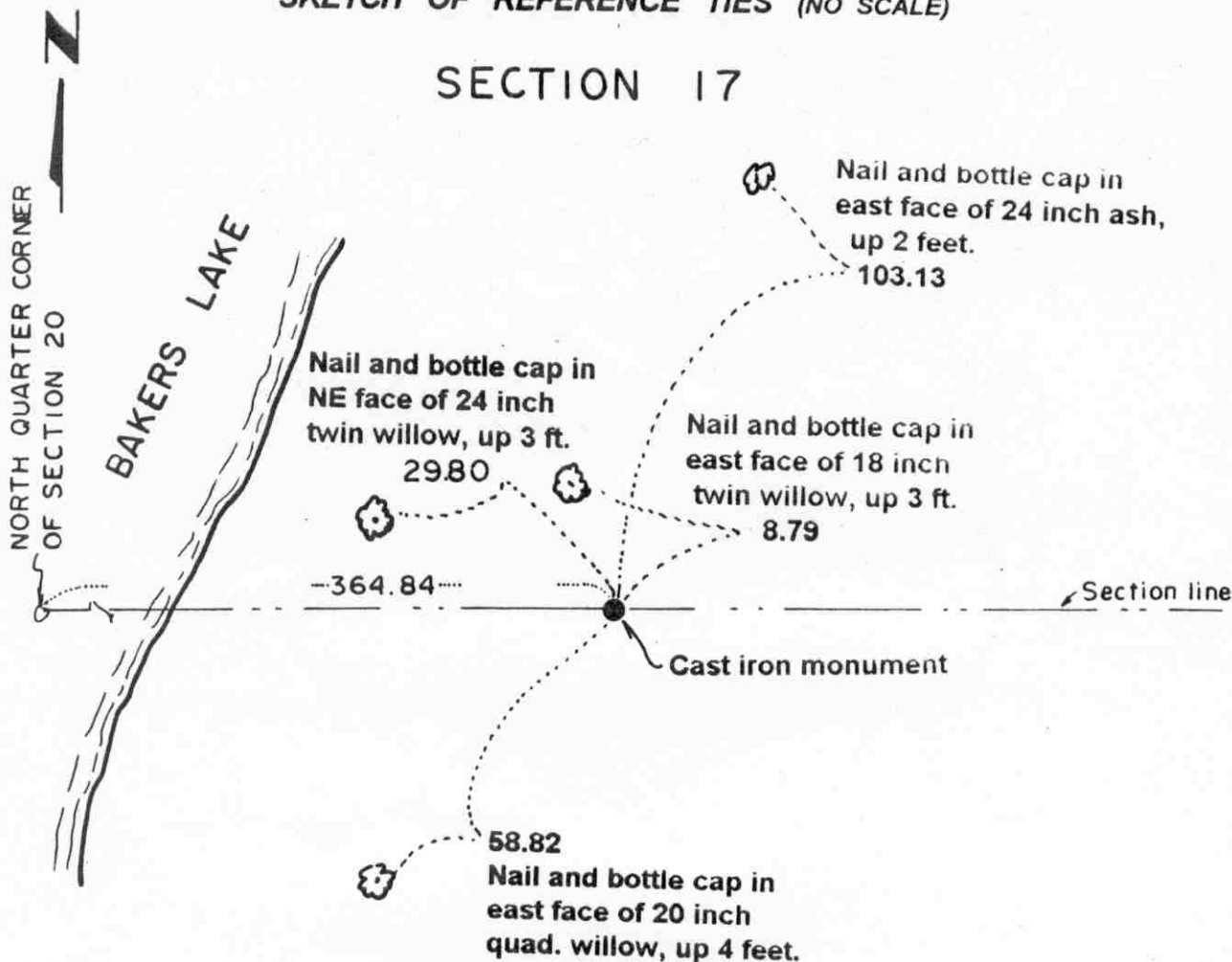
We measured the north and east lines of Section 20 and the east line of the Southeast Quarter of Section 17. Our distance to the north quarter corner of Section 20 is 2650.68 feet, to the east quarter corner of Section 20 we measured 2629.28 feet and to the east quarter corner of Section 17 we measured 2638.28 feet.

Certificate of Location of Government Corner

WITNESS N1/4 corner, Section 20, Township 114 North, Range 29 West

SKETCH OF REFERENCE TIES (NO SCALE)

SECTION 17



SECTION 20

Statement of evidence relative to this corner location on sheet 2

I hereby certify that this document was prepared by me or under my direct supervision.

Willard Pellinen

Willard Pellinen
McLeod County Surveyor
License No. 9626.

Date June 1, 1993

OFFICE OF THE COUNTY RECORDER
MCLEOD COUNTY, MINNESOTA

I hereby certify that this document was filed in this office at 9 o'clock A.M. on the 9th day of January 19 96.

Carmen Estelle Mulder, County Recorder

By Charleen Engstrom, Deputy.

Document No. 270175

Certificate of Location of Government Corner
Witness Corner, Section 20, Township 114 North, Range 29 West

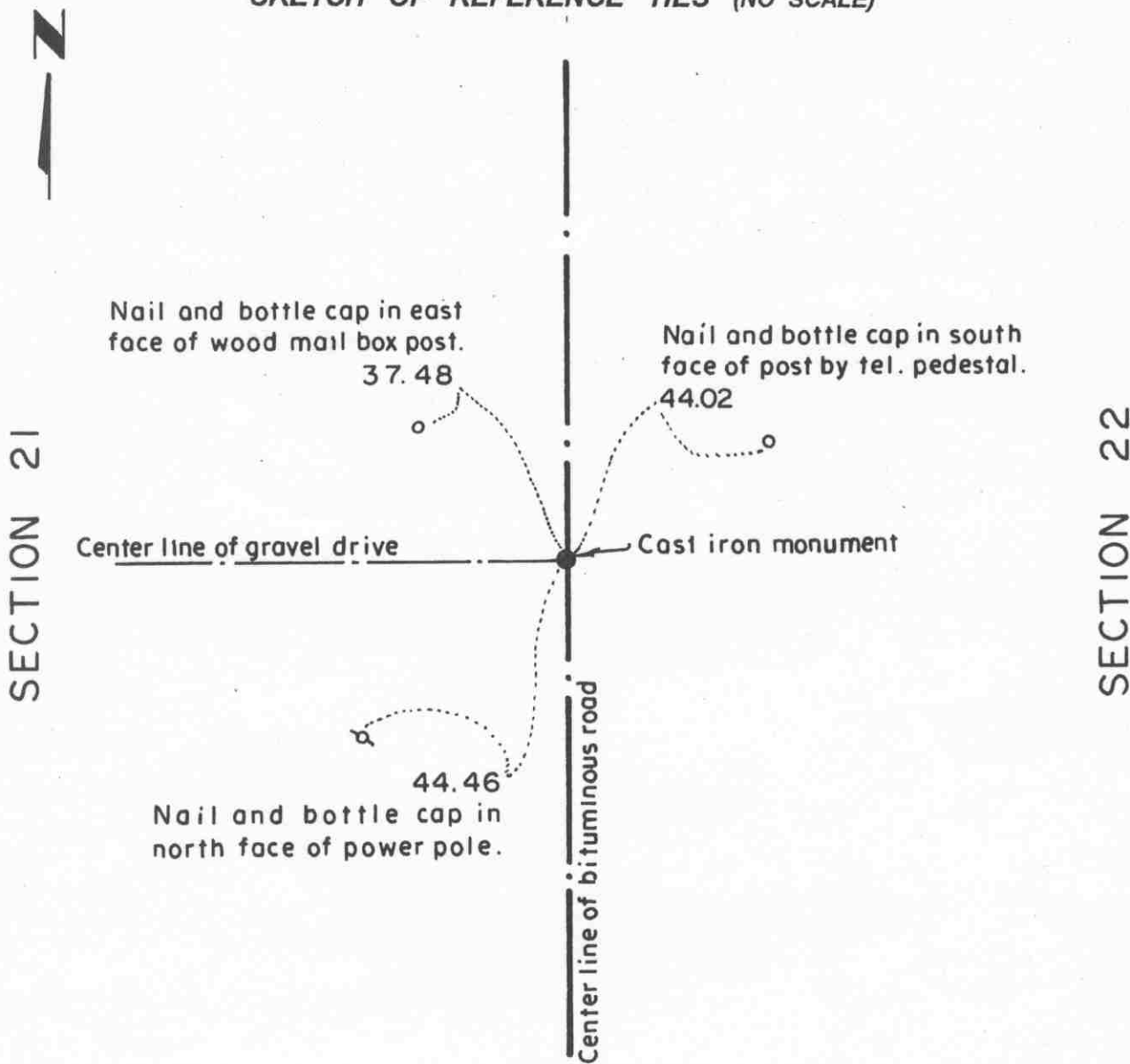
The north quarter corner was not set by the original government survey. It falls in the lake.

1985. We measured Sections 7, 8, 17 and 18. No property line between Sections 17 and 20. We set a witness corner on a straight line between the northeast corner of Section 20 and the computed north quarter corner of Section 20. We set a McLeod County cast iron monument, flush with the surface of the ground with a 1/2 inch diameter iron pipe below the monument, and took available ties. This witness corner is 364.84 feet east of the computed location of the quarter corner.

Certificate of Location of Government Corner

EAST QUARTER corner, Section 21, Township 114 North, Range 29 West

SKETCH OF REFERENCE TIES (NO SCALE)



Statement of evidence relative to this corner location on sheet 2

I hereby certify that this document was prepared by me or under my direct supervision.

Willard Pellinen
Willard Pellinen
McLeod County Surveyor
License No. 9626.

Date Nov. 10, 1995

**OFFICE OF THE COUNTY RECORDER
MCLEOD COUNTY, MINNESOTA**

I hereby certify that this document was filed in this office at 9 o'clock A.M. on the 15th day of November 19 95.

Carmen Postlie Melder County Recorder

By _____, Deputy.

Document No. 269358

Certificate of Location of Government Corner
East Quarter Corner, Section 21, Township 114 North, Range 29 West

July, 1855. A. H. Runyon of the General Land Office established this corner. He set a post, drove a charred stake, raised a mound of earth with trench and pits and planted maclura seeds at the southeast corner of the mound.

Old county highway department field notes show a double hub was set at this corner.

1970. Dickman Knutson, county surveyor, excavated for the corner and found a double hub and took reference ties. No other monumentation was found. This was on the center line intersection of roads north, south, east and west. Adjacent property owners agree this is the correct location for the corner.

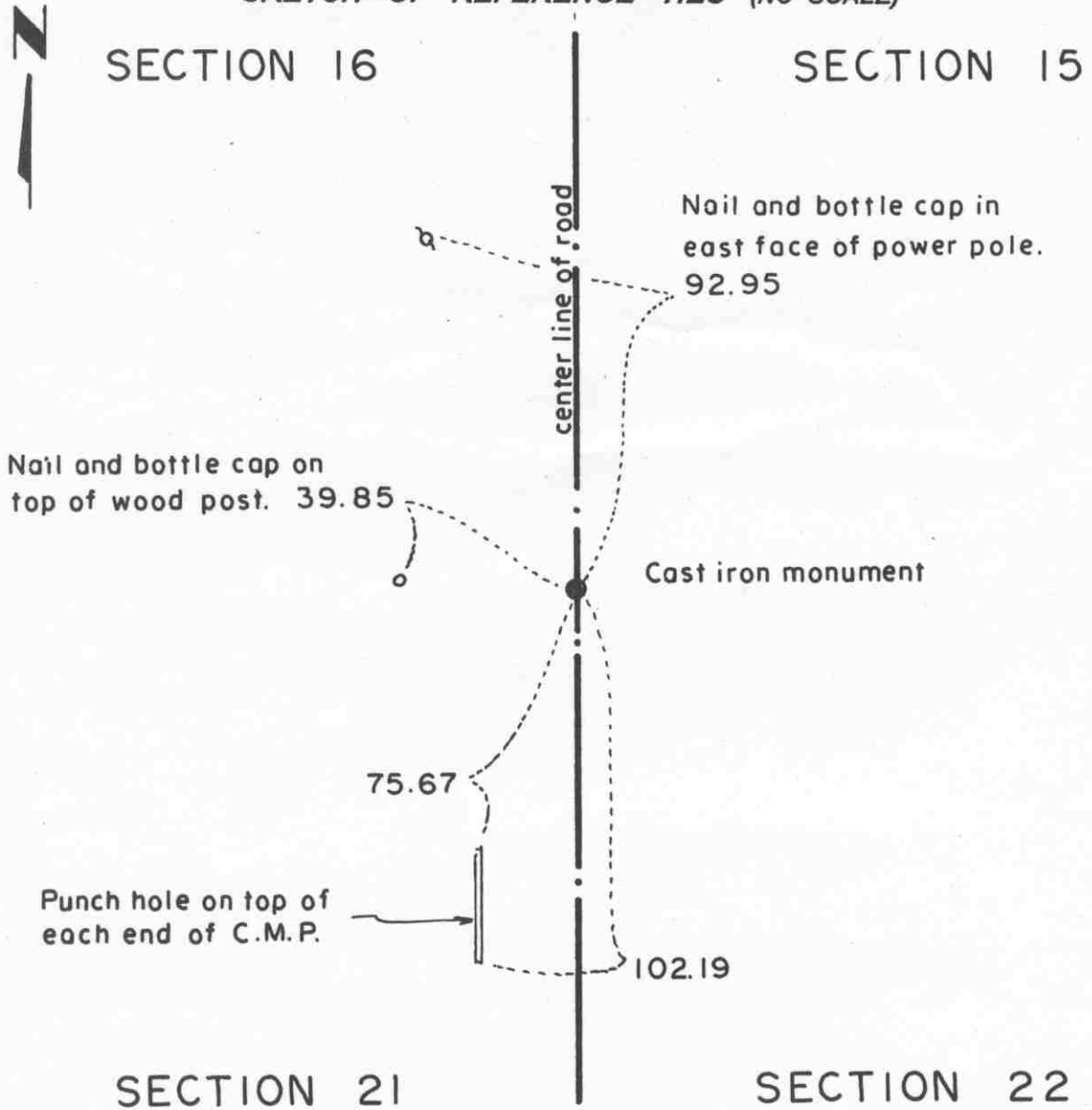
July 15, 1982. We set a McLeod County cast iron monument at the location of the found double hub and took new reference ties.

February 22, 1995. We found the monument in good condition down 4 inches below the surface of the bituminous road and took new reference ties.

Certificate of Location of Government Corner

Northeast corner, Section 21 , Township 114 North, Range 29 West

SKETCH OF REFERENCE TIES (NO SCALE)



Statement of evidence relative to this corner location on sheet 2

I hereby certify that this document was prepared by me or under my direct supervision.

Willard Pellinen
 Willard Pellinen
 McLeod County Surveyor
 License No. 9626.

Date Aug. 7, 1995

OFFICE OF THE COUNTY RECORDER MCLEOD COUNTY, MINNESOTA

I hereby certify that this document was filed in this office at 9 o'clock A M. on the 8th day of August 19 95 .

GARMEN OSTLE BUILDING, MCLEOD COUNTY RECORDER _____, County Recorder

By Dhyllia Sopsowiak, Deputy.

Document No. 267398

Certificate of Location of Government Corner
Northeast Corner, Section 21, Township 114 North, Range 29 West

July, 1855. A. H. Runyon of the General Land Office established this corner. He set a post, drove a charred stake, raised a mound of earth with trench and pits and planted maclura seeds at the southeast corner of the mound.

1978. Dickman Knutson, county surveyor, dug for the corner and found an iron pin. There were no occupation lines running east or west. Knutson dug at approximately 1/3 of the distance from the east quarter corner of Section 21 to the northeast corner of Section 16, at the center line of the north-south road. Using the found iron as the corner makes the center line of a road running east 1/4 mile north fall on the 1/16 line and a fence running east 1/4 mile south also falls very close to the 1/16 line.

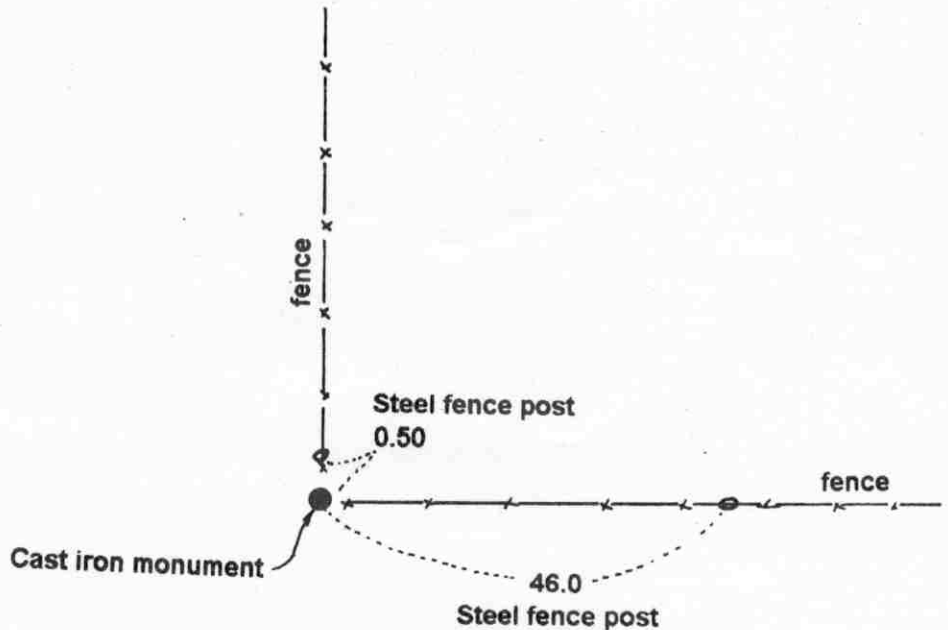
February 22, 1995. We checked the reference ties.

Certificate of Location of Government Corner

NORTH QUARTER corner, Section 21, Township 114 North, Range 29 West

SKETCH OF REFERENCE TIES (NO SCALE)

SECTION 16



SECTION 21

Statement of evidence relative to this corner location on sheet 2

I hereby certify that this document was prepared by me or under my direct supervision.

Willard Pellinen

Willard Pellinen
McLeod County Surveyor
License No. 9626.

Date Sept. 7, 1995

OFFICE OF THE COUNTY RECORDER
MCLEOD COUNTY, MINNESOTA

I hereby certify that this document was filed in this office at 9 o'clock A. M. on the 14th day of Sept 19 95.

(Armen) Estlie Mulder, County Recorder

By _____, Deputy.

Document No. 268030

Certificate of Location of Government Corner
North Quarter Corner, Section 21, Township 114 North, Range 29 West

July, 1855. A. H. Runyon of the General Land Office established this corner. He set a post, drove a charred stake, raised a mound of earth with trench and pits and planted maclura seeds at the southeast corner of the mound.

August, 1971. DNR found a 4 inch by 6 inch by 10 inch granite stone at a fence intersection, fences east, west and north.

July, 24, 1980. H. Winterfeldt, 66 years old, and who owned the East Half of the West Half of Section 16 and the Northwest Quarter of the Southeast Quarter of Section 16, stated these fences have been there at least 60 years and have been accepted as the section and quarter section lines by adjacent property owners.

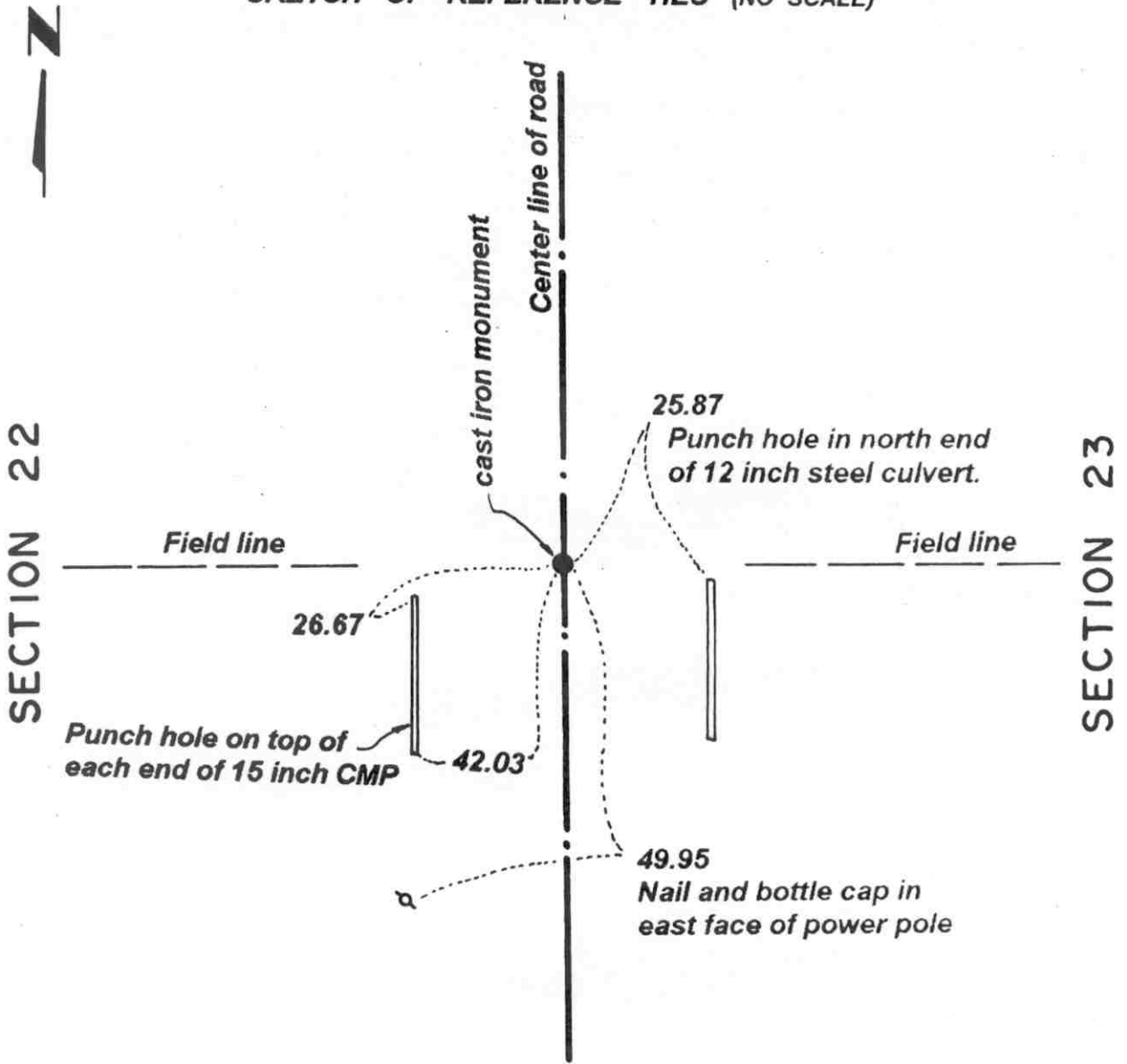
July 24, 1980. We set a McLeod County cast iron monument in place of the granite stone and took available reference ties.

April 10, 1995. We found the monument in good condition and took new reference ties.

Certificate of Location of Government Corner

EAST QUARTER corner, Section 22, Township 114 North, Range 29 West

SKETCH OF REFERENCE TIES (NO SCALE)



Statement of evidence relative to this corner location on sheet 2

I hereby certify that this document was prepared by me or under my direct supervision.

Willard Pellinen
 Willard Pellinen
 McLeod County Surveyor
 License No. 9626.

Date June 9, 1995

**OFFICE OF THE COUNTY RECORDER
 MCLEOD COUNTY, MINNESOTA**

I hereby certify that this document was filed in this office at 2 o'clock P. M. on the 13th day of June 19 95.

CARMEN OSTLE BILD-F, McLEOD COUNTY RECORDER, County Recorder

By Phyllis Sopkowiak, Deputy.

Document No. 266247

Certificate of Location of Government Corner

East Quarter Corner, Section 22, Township 114 North, Range 29 West

July, 1855. A. H. Runyon of the General Land Office established this corner. He set a post, drove a charred stake, raised a mound of earth with trench and pits and planted maclura seeds at the southeast corner of the mound.

Adjacent land owners have accepted the intersection of the center line of the north-south road and field divisions east and west as the location of the quarter corner.

June 10, 1981. We excavated for the corner, John Tupa from Hutchinson with a backhoe. Down 4 feet below the surface of the gravel road we found a 8 inch by 10 inch stone, set on end. We took available reference ties. This is within a few feet of being on a split between the section corners.

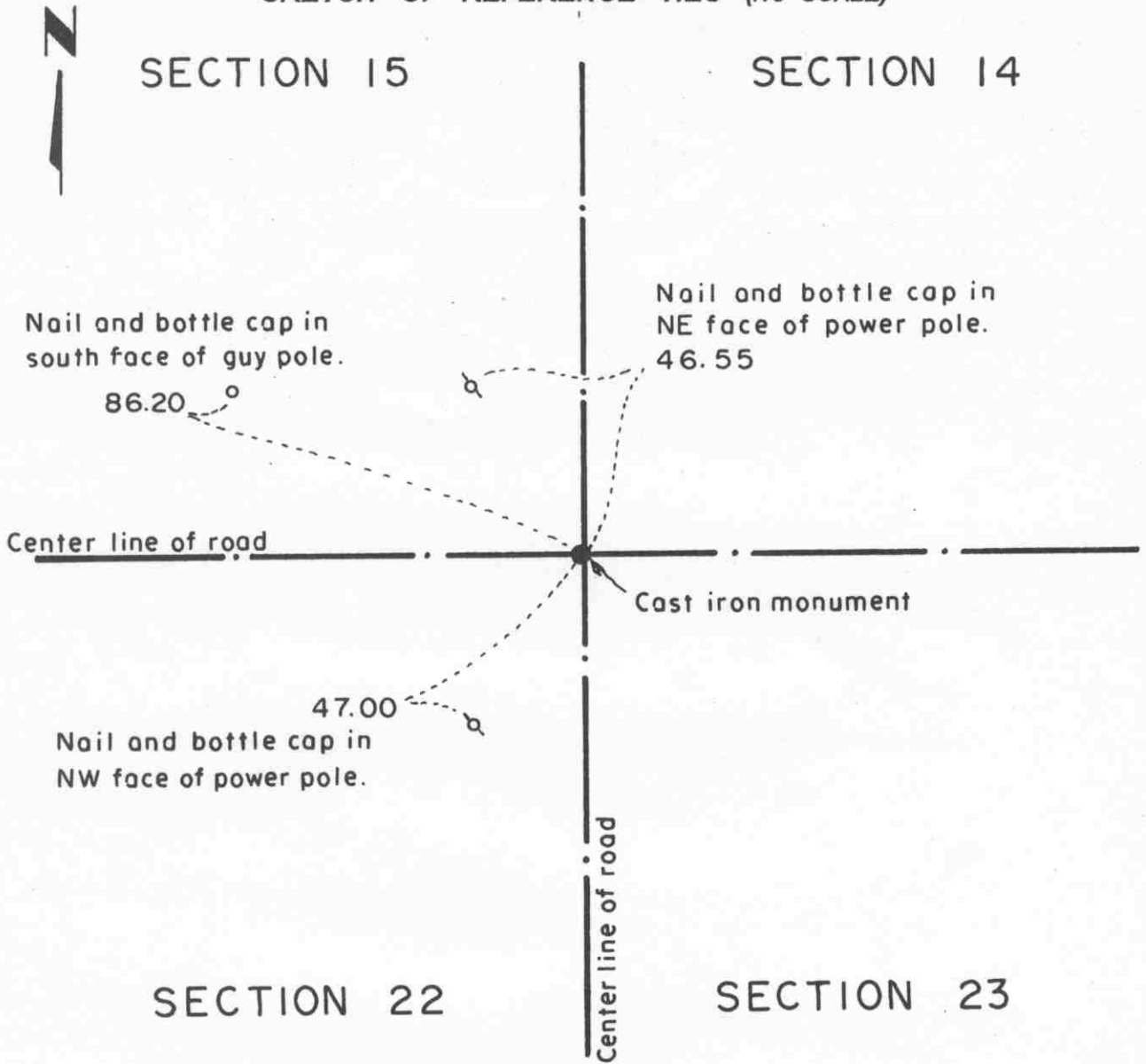
July 10, 1981. We set a McLeod County cast iron monument and took additional ties.

March 27, 1995. We found the monument in good condition down 12 inches below the surface of the gravel road and took new reference ties.

Certificate of Location of Government Corner

NORTHEAST corner, Section 22, Township 114 North, Range 29 West

SKETCH OF REFERENCE TIES (NO SCALE)



Statement of evidence relative to this corner location on sheet 2

I hereby certify that this document was prepared by me or under my direct supervision.

Willard Pellinen
Willard Pellinen
McLeod County Surveyor
License No. 9626.

Date Nov. 10, 1995

OFFICE OF THE COUNTY RECORDER
MCLEOD COUNTY, MINNESOTA

I hereby certify that this document was filed in this office at 9 o'clock A. M. on the 15th day of November 19 95.

Carmen Estlie Mulder, County Recorder

By _____, Deputy.

Document No. 269359

***Certificate of Location of Government Corner
Northeast Corner, Section 22, Township 114 North, Range 29 West***

July, 1855. A. H. Runyon of the General Land Office established this corner. He set a post, drove a charred stake, raised a mound of earth with trench and pits and planted maclura seeds at the southeast corner of the mound.

Adjoining property owners accept the center line intersection of the roads as being the section corner.

June 10, 1981. We excavated for the corner, John Tupa from Hutchinson with a backhoe. We dug a hole 10 feet by 10 feet by 5 feet deep but found no evidence of the government corner.

July 10, 1981. We set a McLeod County cast iron monument at the center line intersection of the roads (roads north, south, east and west) and took available reference ties.

February 22, 1995. We checked the reference ties.

Certificate of Location of Government Corner

NORTH QUARTER corner, Section 22, Township 114 North, Range 29 West

SKETCH OF REFERENCE TIES (NO SCALE)



SECTION 15

Punch hole on top of each end
of 12 inch C.M.P., 24 feet long

19.51

3.26

Center line of road .

R.R. Spike

2638.99 feet to NW cor.
of Sec. 22.

2639.31 feet to NE cor.
of Sec. 22.



SECTION 22

Statement of evidence relative to this corner location on sheet 2

I hereby certify that this document
was prepared by me or under my
direct supervision.

Willard Pellinen

Willard Pellinen
McLeod County Surveyor
License No. 9626.

Date Sept. 7, 1995

OFFICE OF THE COUNTY RECORDER
MCLEOD COUNTY, MINNESOTA

I hereby certify that this document was filed in this office at 9
o'clock A M. on the 14th day of Sept
19 95.

Carmen Ostlie Mulder, County Recorder

By _____, Deputy.

Document No. 268031

Certificate of Location of Government Corner

North Quarter Corner, Section 22, Township 114 North, Range 29 West

July, 1855. A. H. Runyon of the General Land Office established this corner. He set a post, drove a charred stake, raised a mound of earth with trench and pits and planted maclura seeds at the southeast corner of the mound.

December 13, 1978. Mr. Martin Lindeman, 57 years old and who lives in Section 15, said his father told him the road was built about 70 years ago and was built along the north line of the Northeast Quarter of Section 22 and along the north-south quarter line of Section 15, so the center line P.I. of the roads should be the quarter corner. Dickman Knutson, county surveyor, set a RR spike at the center line P.I. of the roads and took reference ties. Any monument at the corner would have been destroyed by road construction. A CMP was placed at this location.

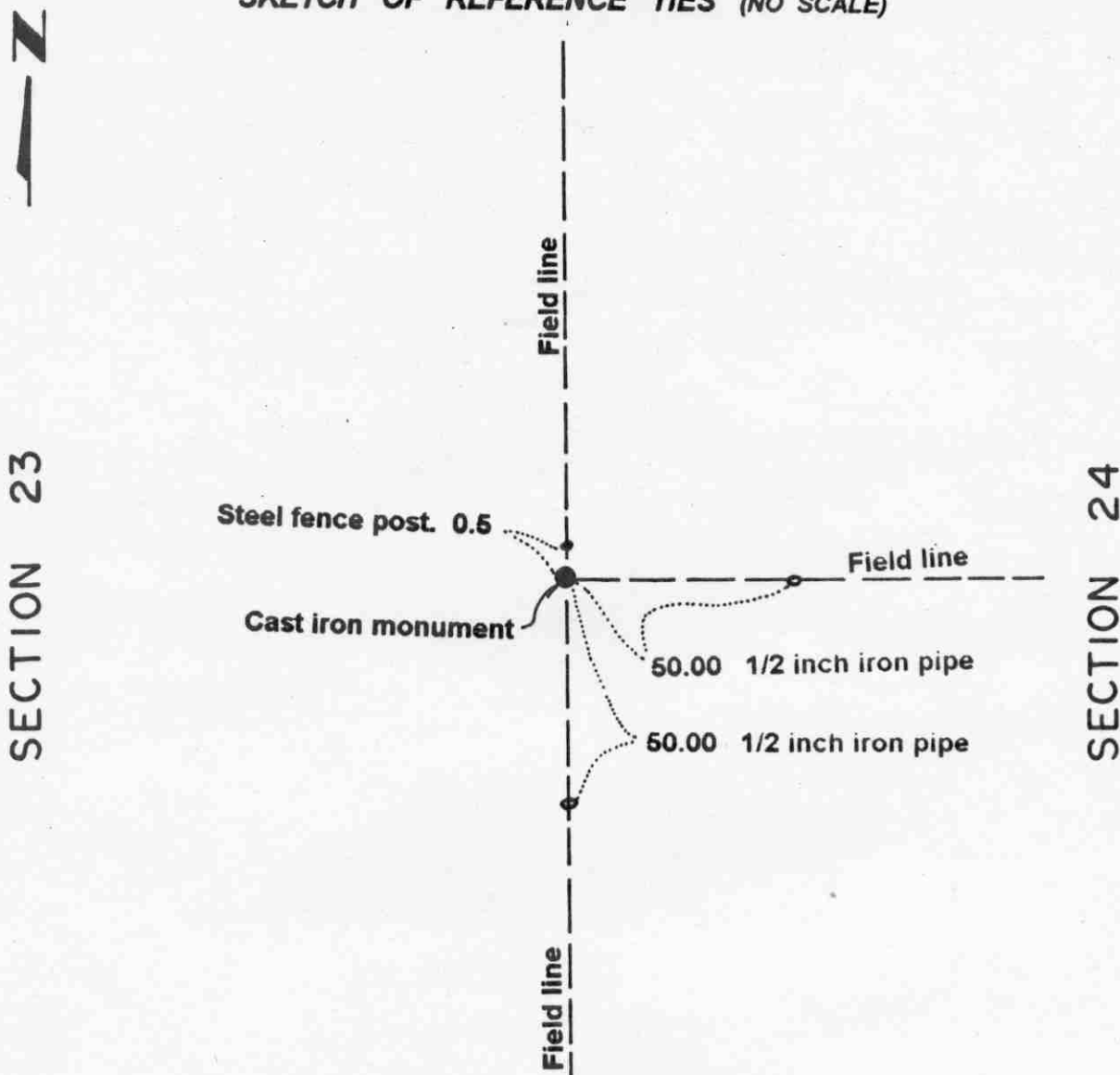
July 6, 1982. We found the railroad spike and took new reference ties. This corner is within less than 1/2 foot of being half way between the section corners. We measured 2638.99 feet to the northwest corner and 2639.31 feet to the northeast corner of Section 22.

February 22, 1995. We checked the reference ties.

Certificate of Location of Government Corner

EAST QUARTER corner, Section 23, Township 114 North, Range 29 West

SKETCH OF REFERENCE TIES (NO SCALE)



Statement of evidence relative to this corner location on sheet 2

I hereby certify that this document was prepared by me or under my direct supervision.

Willard Pellinen
 Willard Pellinen
 McLeod County Surveyor
 License No. 9626.

Date Sept. 11, 1995

OFFICE OF THE COUNTY RECORDER MCLEOD COUNTY, MINNESOTA

I hereby certify that this document was filed in this office at 9 o'clock A.M. on the 14th day of Sept 19 95.

Carmen Helie Mulder, County Recorder

By _____, Deputy.

Document No. 268033

Certificate of Location of Government Corner

East Quarter Corner, Section 23, Township 114 North, Range 29 West

July, 1855. A. H. Runyon of the General Land Office established this corner. He set a post, drove a charred stake, raised a mound of earth with trench and pits and planted maclura seeds at the southeast corner of the mound.

March 11, 1986. We measured the east line of Section 23 and set a temporary east quarter corner at the intersection of field lines north, south and east. We set a half inch diameter iron pipe. Mr. Gerhard Hahn, who lived in the Northwest Quarter of Section 24 for 50 years (daughter now owns the farm and rents it out) said the intersection of the field lines had always been accepted as the quarter corner. He didn't know if the field lines are still in the same place after the renters began farming the Hahn farm. Mr. Harold Bauer, 65 years old, and in the Southwest Quarter of Section 24 since 1945, agrees with Mr. Hahn.

March 12, 1986. We ran the east-west quarter line of Section 24 to check the occupation near the center of Section 24. Using our temporary quarter corner, the field line near the center is within 8 feet of being on the quarter line.

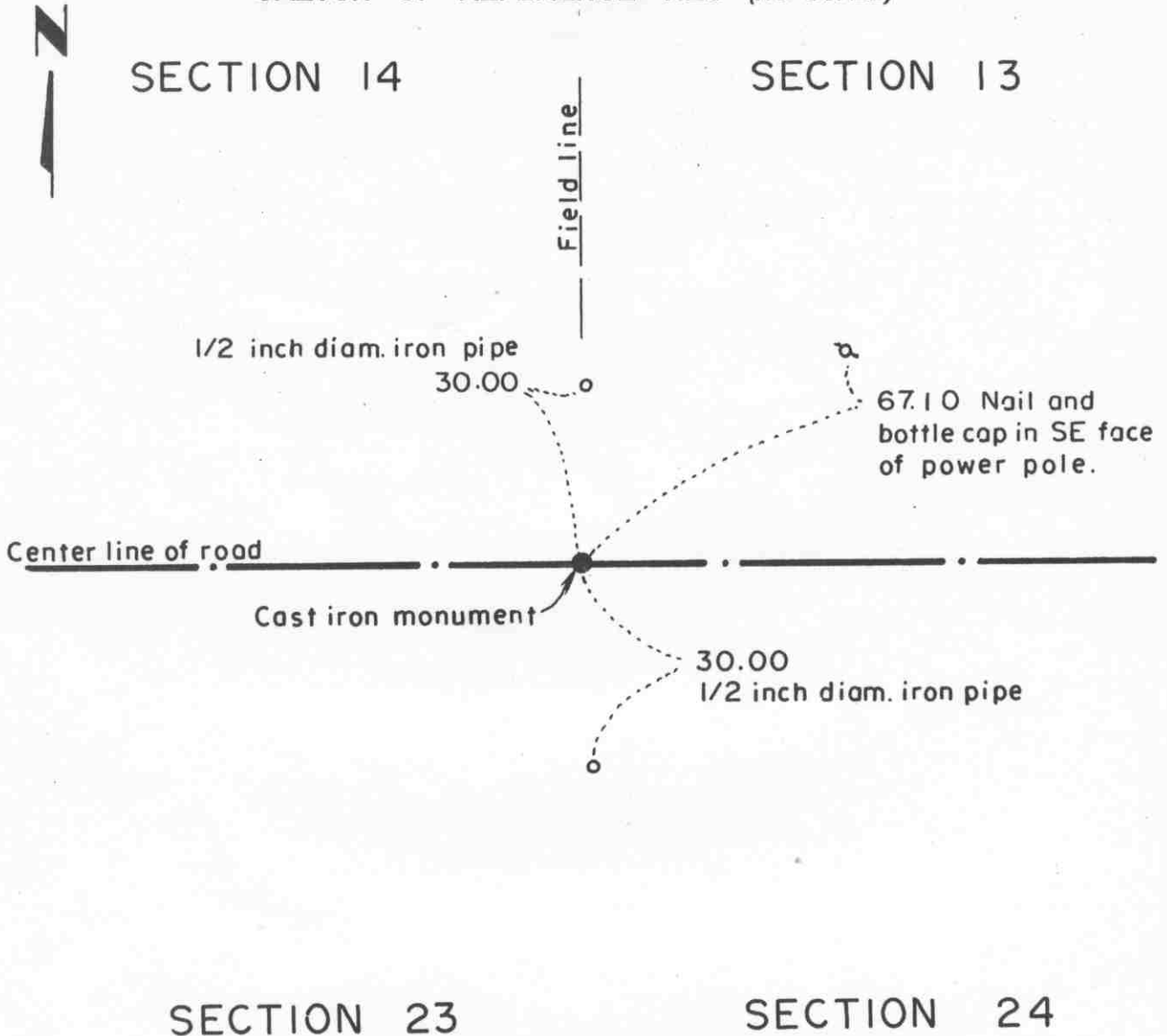
July 21, 1986. We ran the east-west quarter line of Section 23 to check the occupation near the center of Section 23. The field line in the west half of Section 23 is on line. No occupation line in the east half of the section.

August 1, 1986. We set a McLeod County cast iron monument with a half inch diameter iron pipe below it at the location of our temporary corner.

Certificate of Location of Government Corner

NORTHEAST corner, Section 23, Township 114 North, Range 29 West

SKETCH OF REFERENCE TIES (NO SCALE)



Statement of evidence relative to this corner location on sheet 2

I hereby certify that this document was prepared by me or under my direct supervision.

Willard Pellinen
Willard Pellinen
McLeod County Surveyor
License No. 9626.

Date Sept. 7, 1995

OFFICE OF THE COUNTY RECORDER
MCLEOD COUNTY, MINNESOTA

I hereby certify that this document was filed in this office at 9 o'clock A M. on the 14th day of Sept 19 95.

Carmen Estlin Gilder, County Recorder

By _____, Deputy.

Document No. 268032

Certificate of Location of Government Corner
Northeast Corner, Section 23, Township 114 North, Range 29 West

July, 1855. A. H. Runyon of the General Land Office established this corner. He set a post, drove a charred stake, raised a mound of earth with trench and pits and planted maclura seeds at the southeast corner of the mound.

July 7, 1978. Dickman Knutson, county surveyor, excavated for the corner. (John Tupa from Hutchinson with a backhoe) They dug in the center of the east-west road, field division to the north. Below the road bed they found a 10 inch by 10 inch by 24 inch stone with a rotted wood stake below the stone. They took reference ties to the wood stake and buried the stone away from the corner to make room for a monument.

September 28, 1978. Knutson set a spike at the corner and took additional reference ties.

July 1980. Willmer Alsleben, 50 years old and had lived in the East Half of Section 14 all his life, stated this point has been accepted as the corner by adjacent land owners.

July 23, 1980. We set a McLeod County cast iron monument at the corner and took new ties.

February 22, 1995. We checked the reference ties.

Certificate of Location of Government Corner

North Quarter Corner, Section 23, Township 114 North, Range 29 West

July, 1855. A. H. Runyon of the General Land Office established this corner. He set a post, drove a charred stake, raised a mound of earth with trench and pits and planted maclura seeds at the southeast corner of the mound.

July 1, 1978. Dickman Knutson, county surveyor, excavated for the corner. (John Tupa from Hutchinson with a backhoe) They dug at the center line of the east-west road in line with a fence to the north. Down 3 feet below the surface of the gravel road they found a wood stake. They took reference ties, dug some more, but found no other evidence of the government corner.

September 28, 1978. Knutson set a spike at the corner and took additional reference ties.

1980. Willmer Alsleben, 50 years old and had lived in the East Half of Section 14 all his life, said this location has been accepted by adjacent property owners as being the quarter corner.

July 23, 1980. We set a McLeod County cast iron monument at the corner and took new reference ties.

February 22, 1995. We checked the reference ties.

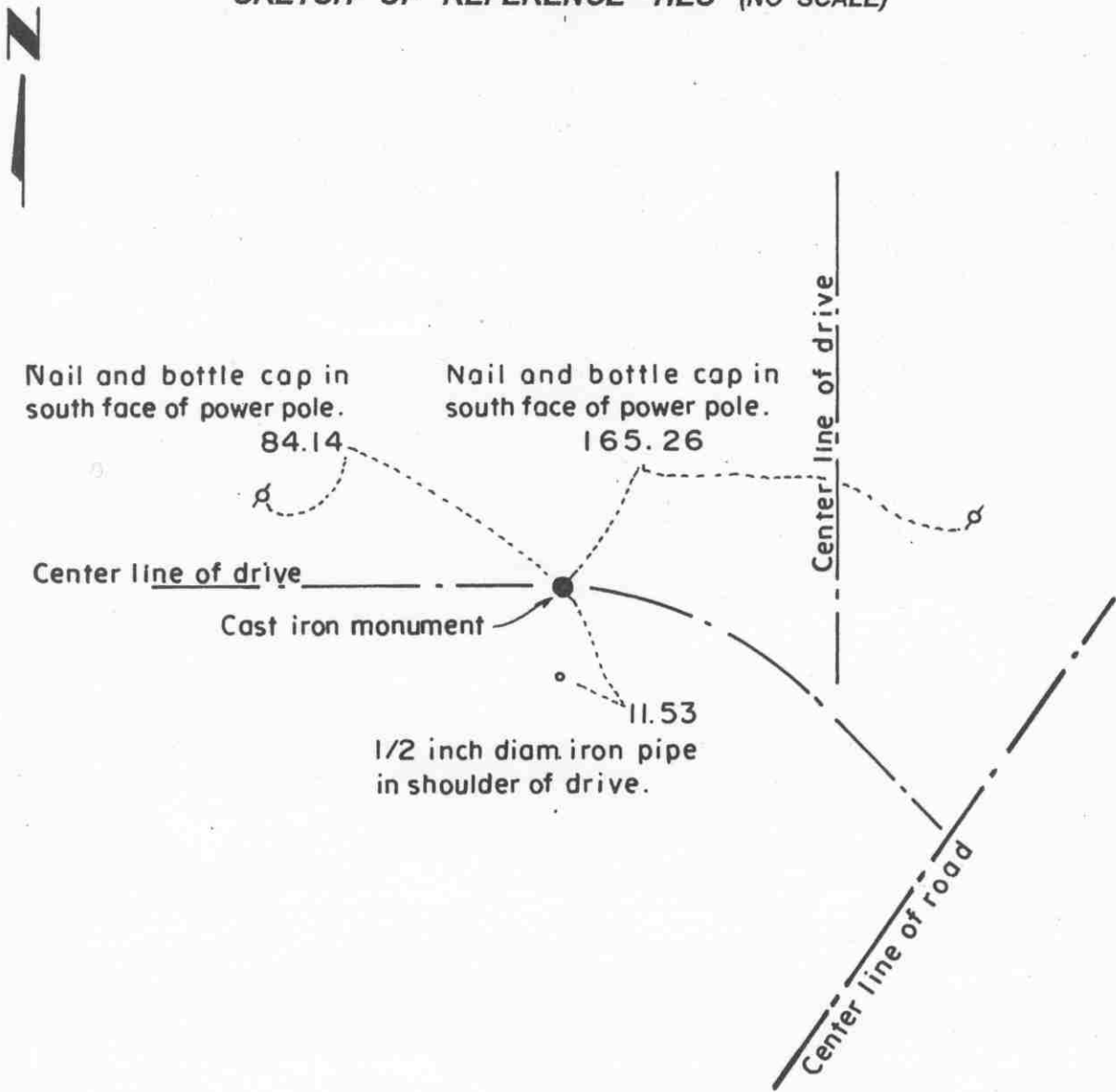
Certificate of Location of Government Corner

EAST QUARTER corner, Section 24, Township 114 North, Range 29 West

SKETCH OF REFERENCE TIES (NO SCALE)

SECTION 24, T.114 N., R.29 W.

SECTION 19, T.114 N., R.28 W.



Statement of evidence relative to this corner location on sheet 2

I hereby certify that this document was prepared by me or under my direct supervision.

Willard Pellinen
 Willard Pellinen
 McLeod County Surveyor
 License No. 9626.

Date Sept. 7, 1995

OFFICE OF THE COUNTY RECORDER
 MCLEOD COUNTY, MINNESOTA

I hereby certify that this document was filed in this office at 9 o'clock A M. on the 14th day of Sept 19 95.

Carmen Estlie Quader, County Recorder

By _____, Deputy.

Document No. 268034

Certificate of Location of Government Corner
East Quarter Corner, Section 24, Township 114 North, Range 29 West

1855. John Ryan of the General Land Office established this corner. He set a post, deposited charcoal, dug pits and trench, built mound and planted osage orange seeds at the corners of the mound.

1938. A. Lehman, Sibley County Engineer, found a stone and set an iron pipe on top.

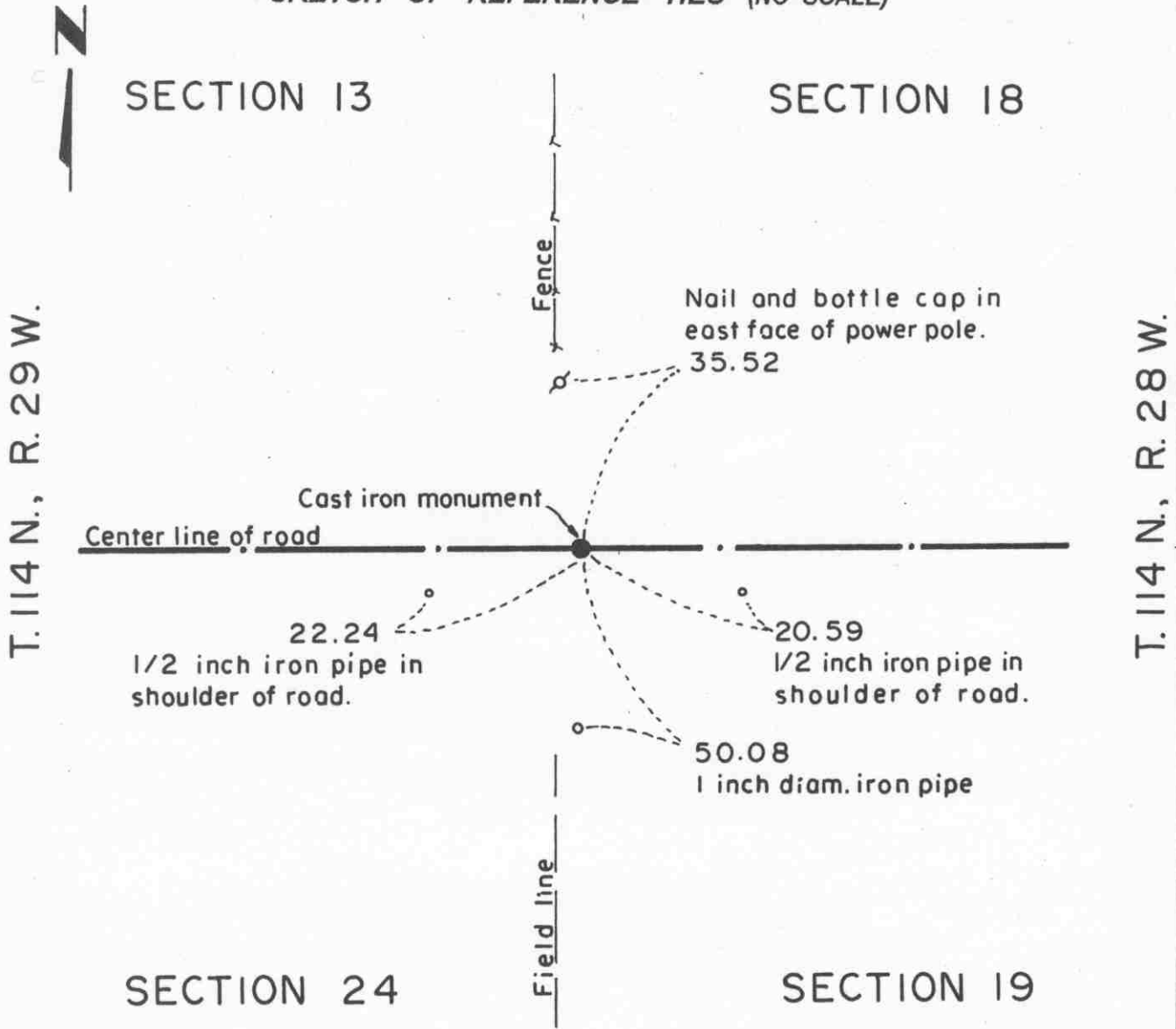
1974. Delbert Rieke, Sibley County Surveyor, found the iron pipe, set a cast iron monument on top and took reference ties.

February 22, 1995. We found the monument in good condition down 3 inches below the surface of the gravel road and took new reference ties.

Certificate of Location of Government Corner

NORTHEAST corner, Section 24, Township 114 North, Range 29 West

SKETCH OF REFERENCE TIES (NO SCALE)



Statement of evidence relative to this corner location on sheet 2

I hereby certify that this document was prepared by me or under my direct supervision.

Willard Pellinen
 Willard Pellinen
 McLeod County Surveyor
 License No. 9626.

Date Nov. 10, 1995

**OFFICE OF THE COUNTY RECORDER
 MCLEOD COUNTY, MINNESOTA**

I hereby certify that this document was filed in this office at 9 o'clock A. M. on the 15th day of November 19 95.

Carmen Ostlie Gulder County Recorder

By _____, Deputy.

Document No. 269361

Certificate of Location of Government Corner
Northeast Corner, Section 24, Township 114 North, Range 29 West

1855. John Ryan of the General Land Office established this corner. He set a post, in a wet marsh, deposited charcoal, dug pits and trench, built mound and planted osage orange seeds at the corners of the mound.

1974. Delbert Rieke, Sibley County Surveyor, taked with Virgil Frauendienst, in the Southwest Quarter of Section 18. He stated the north-south fence is on the section line. Mr Lorenze Trebbensee, who owned land west of the corner, agreed.

Rieke dug and found an iron stake with a wooden peg along side in the center of the east-west road, in line with a field division to the south. This was 3 feet east of the fence to the north. Rieke set a cast iron monument and took reference ties.

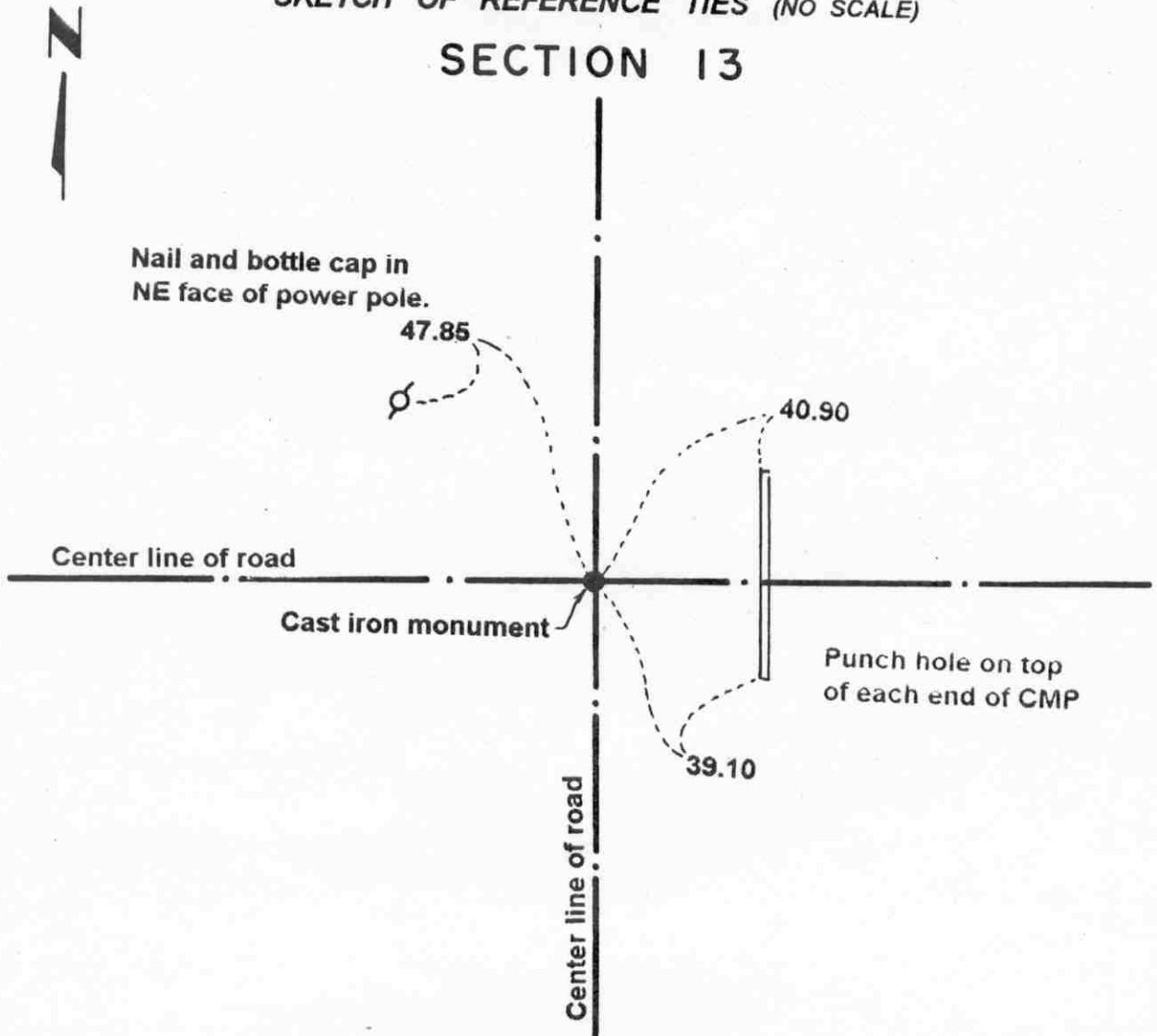
February 22, 1995. We found the monument in good condition down 8 inches below the surface of the gravel road and took new reference ties.

Certificate of Location of Government Corner

NORTH QUARTER corner, Section 24, Township 114 North, Range 29 West

SKETCH OF REFERENCE TIES (NO SCALE)

SECTION 13



SECTION 24

Statement of evidence relative to this corner location on sheet 2

I hereby certify that this document was prepared by me or under my direct supervision.

Willard Pellinen
Willard Pellinen
McLeod County Surveyor
License No. 9626.

Date Nov. 6, 1995

OFFICE OF THE COUNTY RECORDER
MCLEOD COUNTY, MINNESOTA

269312

I hereby certify that this document was filed in this office at 9 o'clock A. M. on the 14th day of November 19 95.

Carmen Patricia Jelder County Recorder

By _____, Deputy.

Document No. _____

Certificate of Location of Government Corner

North Quarter Corner, Section 24, Township 114 North, Range 29 West

July, 1855. A. H. Runyon of the General Land Office established this corner. He set a post, drove a charred stake, raised a mound of earth with trench and pits and planted maclura seeds at the southeast corner of the mound.

Adjacent land owners agree the center line intersection of the roads is the quarter corner.

July 7, 1978. Dickman Knutson, county surveyor, excavated for the corner at the center line intersection of the roads north, south, east and west. (John Tupa from Hutchinson with a backhoe) They dug a hole 8 feet by 8 feet by 4 feet deep but found no evidence of the government corner.

July 24, 1980. We set a McLeod County cast iron monument at the intersection and took reference ties.

April 28, 1995. We checked the reference ties.